


---

# Welltrax Updating Layout Guide

**For tablets that are running Android 8.0 or  
higher**

# Fixing the one column layout on pickup screen

- The following slides will fix the issue of only one column showing up on the pick up screen for crude loads.







Rest In - 06:21

Duty Left - 12:21

Driving Left - 11:00

Cycle Left - 68:21

ON



PICK UP

Status Accept

TIME

Arrival 12:23

Load 00:02:49

Wait Time 00:00:00

Departure Time

Notes / Additional Charges

Instructions

Report Spill

Picture / Video

☐ Tank In Production

Gauge Type HAND

Top Gauge 5 ft 2 in 0 1/4 in

Bottom Gauge 3 ft 2 in 0 1/4 in

Gross Barrels 66.86 STRAPPED

Bottom Height 0 ft 2 in 3/4 1/4 in

TEMPERATURES

Top 36

Bottom 36

Observed 36

PRODUCT TYPE - Select Product Type -

Observed

1/1

Split Pickup Same Location

Sign & Print

Depart Pick Up

- Truck: ASOK P112 - Trailer: 101 - Shift: 12/18

Unsent: 0 Sent: 18

# Fixing the one column layout on pickup screen

- Click The Superman icon on the top of the tablet.

Wx Rest In - 06:21 Duty Left - 12:21 ON G 📡 ✉ 🏠 **Superman** ?

**PICK UP** Status Accept

**TIME**

Arrival 12:23

Load 00:02:49

Wait Time 00:00:00

Departure Time

☐ Tank In Production

Gauge Type HAND

Top Gauge 5 ft 2 in 0 1/4 in

Bottom Gauge 3 ft 2 in 0 1/4 in

Gross Barrels 66.86 STRAPPED

Bottom Height 0 ft 2 in 3/4 1/4 in

**TEMPERATURES**

Top	Bottom	Observed
36	36	36

PRODUCT TYPE - Select Product Type -

Observed

1/1 Split Pickup Same Location Sign & Print Depart Pick Up

- Truck: ASOK P112 - Trailer: 101 - Shift: 12/18 Unsent: 0 Sent: 18

# Fixing the one column layout on pickup screen

- On the Superman screen, click the “Update Layouts” button

The screenshot shows the WelltraX Superman screen. At the top, there is a status bar with the WelltraX logo, status indicators (Rest In, Driving Left, Duty Left, Cycle Left), a dropdown menu (ON), and several icons (G, oil pump, envelope, house, Superman, question mark). Below the status bar, the version number 'Version: 4.0.2.15' and 'Support Settings' are displayed. The main area contains three buttons: 'Bluetooth Settings', 'Upload DB', and 'Update Layouts'. The 'Update Layouts' button is highlighted with a red box, and a red arrow points to it with the text 'Click'. Below the buttons, there is a section for 'Advanced Settings' which includes a password field and a 'Server Name' field. The 'Server Name' field contains 'testing.vertrax.com : 8282 / WellSite'. Below this, there is a 'Organization Name' field. A red box highlights a message box that says 'Successfully updated site layouts.' and a 'Save + Exit' button. On the left side, there are options for '3 Printer' (OFF), 'Deactivate GeoPings:', 'Send Transactions:', and 'Send Trans Immediate:'. On the right side, there are options for 'Go to Home Screen', 'Go to Android Settings', 'Launch Rescue', and 'Launch Debug Dialog'. At the bottom, there is a status bar with the text 'Truck: ASOK P112 - Trailer: 101 - Shift: 12/18' and 'Unsent: 0 Sent: 18'.

# Fixing the one column layout on pickup screen

- Now click the home button, then log out of Welltrax, **you do not need to submit your shift when you logout.**

**W>X** Rest In - 06:21 Duty Left - 12:21 ON G 🛢️ ✉️ **🏠** 🦹 ?

**PICK UP** Status Accept

**TIME**

Arrival 12:23

Load 00:02:49

Wait Time 00:00:00

Departure Time

**Gauge Type** HAND

**Top Gauge** 5 ft 2 in 0 1/4 in

**Bottom Gauge** 3 ft 2 in 0 1/4 in

**Gross Barrels** 66.86 **STRAPPED**

**Bottom Height** 0 ft 2 in 3/4 1/4 in

**TEMPERATURES**

Top	Bottom	Observed
36	36	36

**PRODUCT TYPE** - Select Product Type -

Observed

1/1 Split Pickup Same Location Sign & Print Depart

**CLENARD BERRY (cberry) - Truck: ASOK P112 - Trailer: 101 - Shift: 12/18** Unsent: 0

**W>X** Rest In - 06:20 Duty Left - 12:20 ON G 🛢️ ✉️ **🏠** 🦹 ?

🛢️ Map View 🔧

**Load** **Map View** **Maintenance**

✉️ Bluetooth 🔋

**Messaging** **Bluetooth** **Fuel Purchase**

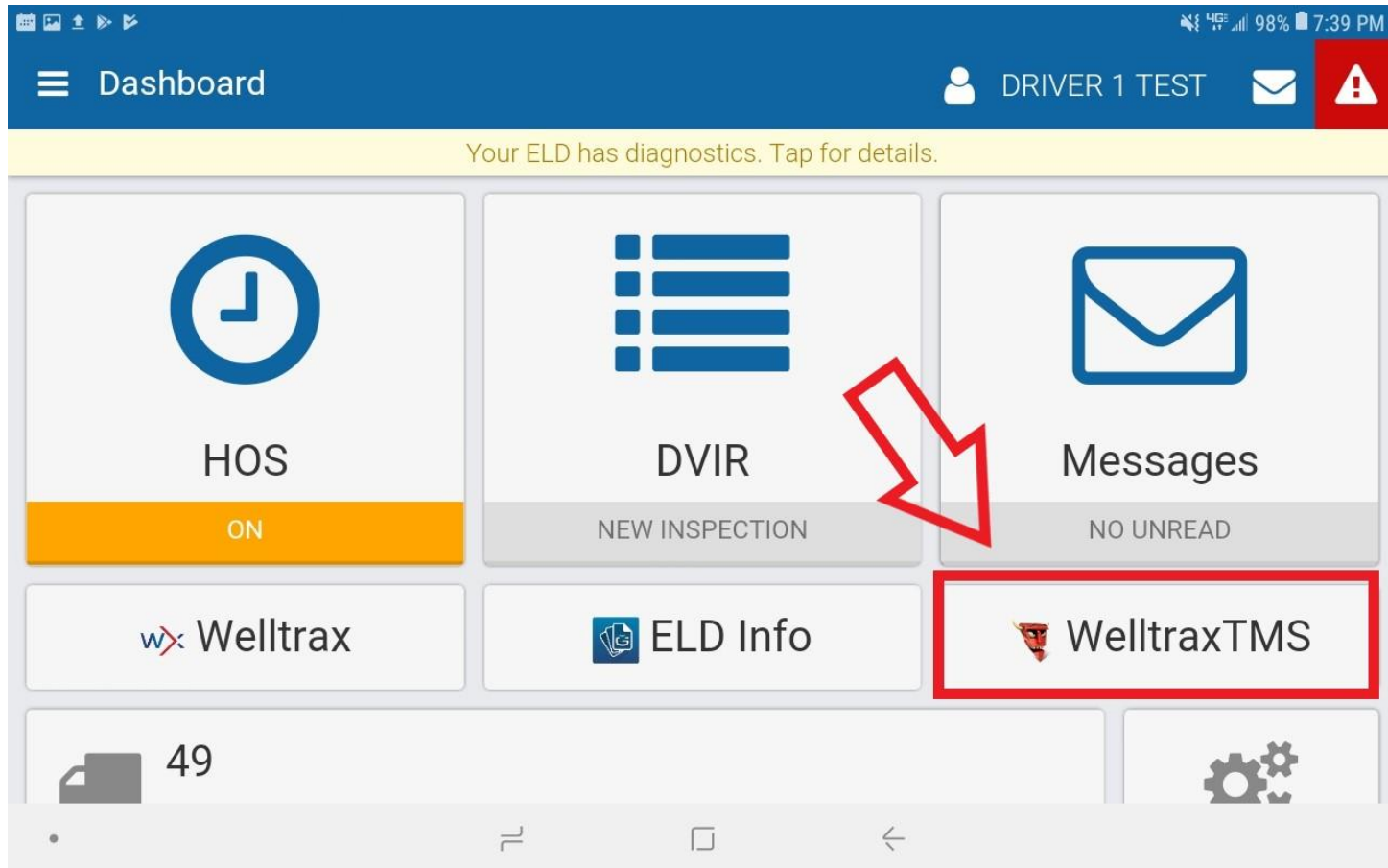
🖨️ 📊 **🔴**

**Policies** **Inspection DVIR/Shift** **Log Out**

**CLENARD BERRY (cberry) - Truck: ASOK P112 - Trailer: 101 - Shift: 12/18** Unsent: 0 Sent: 18

# Fixing the one column layout on pickup screen

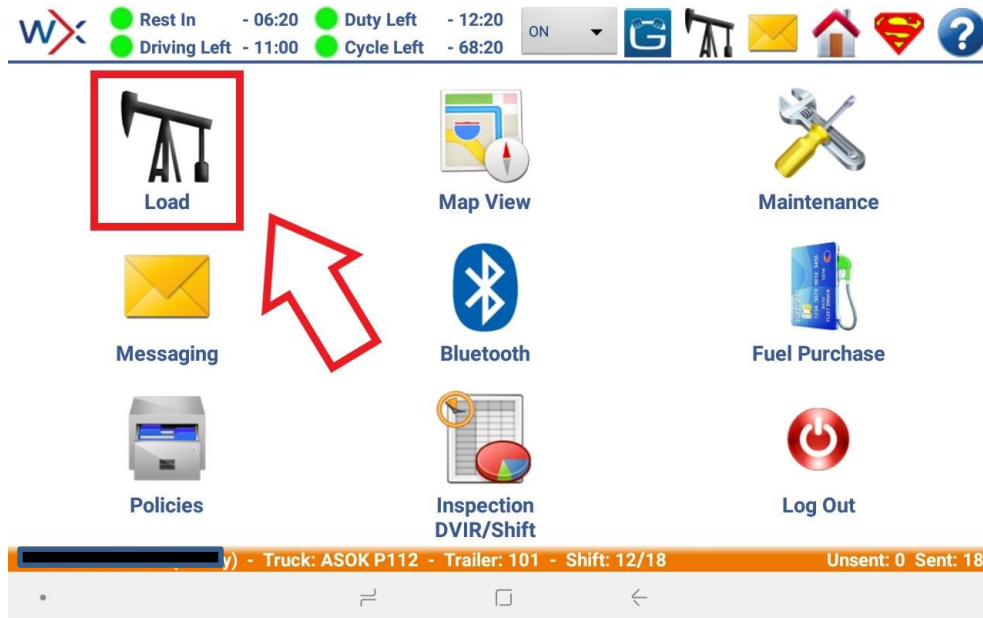
- Re-login to Welltrax TMS from your Geotab homepage





# Fixing the one column layout on pickup screen

➤ Now return to your ongoing load by clicking the “Load” icon, and then “Resume Load”



Wx Rest In - 06:19 Duty Left - 12:19 ON G [Icons]

Driving Left - 11:00 Cycle Left - 68:19

BOL #	URGENT/ SPLIT	ACCOUNT	PICKUP	TANK	DROPOFF	LOADED MILES	REQ. PICKUP DATE	STATUS	PRINT
000041216		BP ENERGY	CYPRESS UNIT 16 10H	100109-1	BP ORYX-REEVES	43	12/18/2018 ANY	COMPLETE	
Load Instructions:									
000038611		JUPITER MARKETING, LLC	UNIVERSITY 38OR BATTERY	- Driver Select -	P66CIGRAIL	46	12/07/2018 ANY	ONGOING	
Load Instructions:									



# Fixing the one column layout on pickup screen

- There should now be two columns displaying on the pickup screen

**W** Rest In - 06:18 Duty Left - 12:18 Driving Left - 11:00 Cycle Left - 68:18 ON

## PICK UP

Status ☒ Accept

TIME	TANK	PRODUCT TYPE
Arrival 12:28	- Driver Select -	- Select Product Type -
Load 00:00:53	<input type="checkbox"/> Tank In Production	Observed Gravity
Wait Time 00:00:00	Gauge Type HAND	BS&W(%)
Departure Time	Top Gauge 1 ft 0 1/4 in	Seal Off #
	Bottom Gauge 0 ft 0 1/4 in	Seal Off Time
	Gross Barrels @ 0.0 BPI	Seal On #
	Bottom Height 0 ft 0 1/4 in	Seal On Time
	TEMPERATURES	ODOMETER 320
	Top Bottom Observed	

Notes / Additional Charges  
Instructions  
Report Spill  
Picture / Video

1/1 Split Pickup Same Location Sign & Print Depart Pick Up

( ) - Truck: ASOK P112 - Trailer: 101 - Shift: 12/18 Unsent: 3 Sent: 0



## Contact Information

---

**Welltrax (6 AM – 6 PM CST):**

**(203) 401-6004**

**support@vertrax.com**